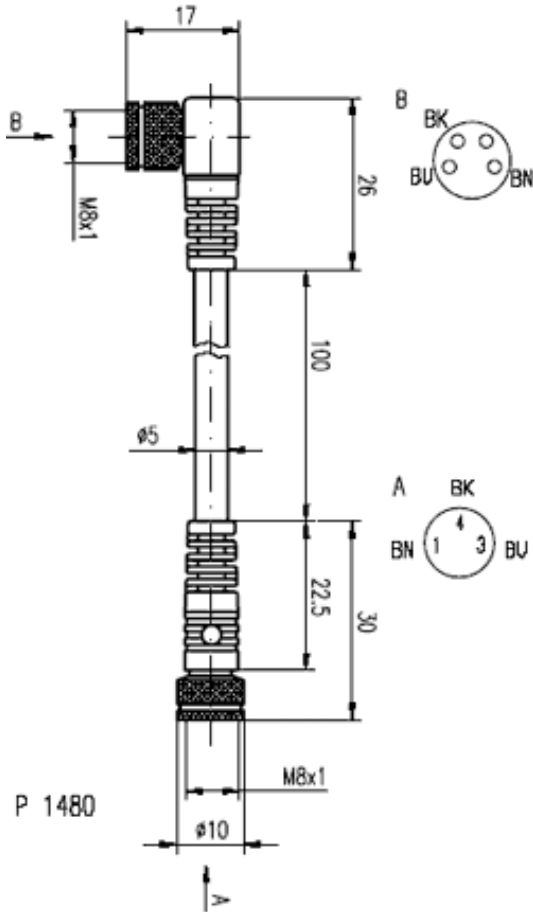


Accessories: Connectors BKS-S 74-1-GS49-PU-



P 1480

Common Data

Version
Usable with
Manufacturer
Ambient temperature

Connection cable, straight, 3-pins
female - female, M8
Lumberg
-25°C...+80°C

Mechanical Data

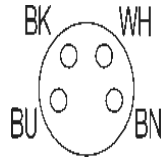
Measurements WxHxD or Dia x D
Material
Protection class per IEC 60529
Cable version
Conductor cross section

26x17x8 + 30xØ10
TPU / PUR
IP67
fully potted, Li9YH-11YH
3 x 0,34mm²

Electrical Data

Supply voltage

10...30V DC



Datasheet number::

Definitions see general catalog.
If not otherwise noted, ratings according to
IEC 60947-5-2 (DIN EN60947-5-2)

Balluff GmbH
Schurwaldstrasse 9
73765 Neuhausen a.d.F.
Phone (07158) 173-0 Fax (07158) 5010

Datenblatt by CD-ROM - 04/2007

BALLUFF
sensors worldwide